



# Tredstep Ireland™



US PRODUCT CATALOGUE 2021

# TABLE OF CONTENTS

TREDSTEP BOOTS . . . . .	3
Renaissance Tall Boots . . . . .	3
Renaissance Paddock Boots . . . . .	9
HALF CHAPS . . . . .	13
Renaissance Half Chaps . . . . .	13
Tredstep Half Chaps . . . . .	14
COUNTRY COLLECTION . . . . .	16
APPAREL . . . . .	26
COMPETITION COATS . . . . .	26
Gents Coat . . . . .	35
JUNIOR COLLECTION . . . . .	36
BREECHES . . . . .	37
Gents Breeches . . . . .	41
Compression Tights . . . . .	42
BREECHES SUMMARY . . . . .	46
SHIRTS AND TOPS . . . . .	47
Competition Shirts . . . . .	47
Gents Competition Shirts . . . . .	50
Casual Shirts . . . . .	51
OUTERWEAR . . . . .	55
TREDSTEP ACCESSORIES . . . . .	57
Socks . . . . .	57
Gloves . . . . .	59
Belts . . . . .	62
PRODUCT SIZE CHARTS & RETAILER SUPPORT . . . . .	63



THE COLLECTION  
*Renaissance*  
by TREDSTEP



THE RENAISSANCE COLLECTION

# Vasari

by TREDSTEP



Introducing the new Vasari. Exquisitely crafted from premium, full grain leather sourced from the best leather producers in Europe, with a luxurious, smooth surface to produce boots of the finest quality.

Extensive curving and shaping throughout the calf ensures a sublimely sculpted personalized fit.

Refined styling along the top line of the boot further enhances the elegant side profile, coupled with a modified neater design finish across the front of the boot for the field lace housing, makes this boot not only exquisitely sleek looking but extremely comfortable to wear.





THE RENAISSANCE COLLECTION

# Medici II

by TREDSTEP

Uncompromised  
anatomical shaping



Padded  
stretch closure



High tensile  
stretch panel ensuring the  
perfect fit every time

A revolutionary,  
technically  
advanced Rubber Sole



THE RENAISSANCE COLLECTION

# Medici II

by TREDSTEP

State-of-the-art design, unmatched rider comfort and a customized, crafted fit all come together in this beautifully sculpted boot.

Highest quality leather



A new moulded rubber sole for improved stirrup grip

MEDICI II FIELD



Designed in Europe



THE RENAISSANCE COLLECTION

# Donatello III

by TREDSTEP

Fully leather lined

A new elastic easy closure at the top of the boot for a snug fit

Super strong size 10 **YKK** zip

Redesigned high tensile stretch panel, ensuring ease of fitting

Flexible design for ease of movement

Spur rests

Shock absorbing sole

New moulded rubber sole for improved stirrup grip



Designed in Europe

See full size chart at the end of brochure. Product detail is subject to change.



THE RENAISSANCE COLLECTION

# Donatello III

by TREDSTEP

The elegant Donatello focuses on rider comfort and movement and has now been improved, so that it offers an even better fit for longer. Perfect whatever your riding discipline.



DONATELLO III  
FIELD



DONATELLO III  
DRESS



DONATELLO III  
JUNIOR



Designed in Europe

THE RENAISSANCE COLLECTION

# Medici II

by TREDSTEP



FRONT ZIP  
BROWN

FRONT ZIP  
BLACK



DOUBLE ZIP - BLACK



LACE (REAR ZIP) - BLACK

See full size chart at the end of brochure. Product detail is subject to change.



The Medici Short boot combines high-class European styling and precise elegance with exquisite aniline calfskin leathers giving a timeless edge to unrivalled refinement and enduring comfort. A new moulded rubber sole for improved stirrup grip, versatile, flexible, hard-wearing and longer lasting.





**NEW**

THE RENAISSANCE COLLECTION

# Donatello

**PADDOCK** by TREDSTEP

Branded Puller

Branded YKK Brass zipper

Full Grain Leather Upper and leather lining

Double gore elastic panels

Spur rests

Contrast stitching



Coolmax lined comfort footbed

DONATELLO PADDOCK FRONT ZIP

Revolutionary advanced rubber sole



DONATELLO PADDOCK BROWN



DONATELLO PADDOCK BLACK

**NEW**

THE RENAISSANCE COLLECTION

# Donatello

**PADDOCK** by TREDSTEP

All the best from our Donatello Tall Boots in a Paddock boot version. Super stylish and practical, crafted in full grain leather and fully leather lined. Mounted on our revolutionary cushioned rubber sole which combines a classic profile with the latest in sole technology, this coupled with a coolmax lined cushioned footbed ensures advanced stirrup grip and ankle flexibility while reducing foot fatigue. Fitted with a Tredstep branded brass zip and double gore elastic panels.



*Coolmax lined comfort footbed*

*Revolutionary advanced rubber sole*



BLACK



BROWN



# Medici Air

Airflow mesh lining

Soft Luxurious  
Leather

A new design combining beautiful premium leathers with lightweight and flexible perforated Neoprene, the Medici Air will ensure a perfect fit to all contours of the leg for close contact and exceptional comfort. The striking textures, curve design and modified side zip placement merges in harmony to produce the latest generation in Tredstep's world famous half chaps.

Complete with an elegant eye catching logo and super strong size 10 zip, specialized mesh lining, the Medici Air brings a refreshing vibrancy to half chaps.

Super strong  
size 10 **YKK** zip

Perforated Neoprene  
stretch panels



Exclusive Tredstep Stretch Leather Side Panel

Exquisite shaping and fit

DELUXE  
HALF CHAP



*"The Deluxe Half Chap is a superstar among chaps"*

Stretch leather apron

Sturdy YKK zip

Soft but Durable  
full grain leather

## LIBERTY

*"For a personalized fit and a comfortable ride."*



Relaxed top profile

Superb shape and fit

## ORIGINAL SUEDE

*"As the name suggests this was our first and therefore the Original."*

Original leather covered stretch panel

Durable Suede



BLACK





THE COLLECTION  
**Country**  
by TREDSTEP

Tredstep is steeped in the tradition and heritage of the Irish horse. Born in a land at one with nature, a land of fertile green pasture, fresh running rivers and rolling hills. Our new Country range of boots captures the spirit of the Irish countryside and the world of the horse.

Look smart around the barn, at the show or stepping out about town.



# LEGACY

Heavy Duty  
YKK Rear Zip

Cuff Leather and  
Floral Pattern  
Padded Lining

Adjustable Sizing

Stretch  
Panel

Oiled Nubuk  
Waterproof  
Leathers

Punch Detailing

Zip Guard

Coolmax  
Lined Cushioned  
Foot bed



All Terrain Outsole

Mahogany



Dark Oak



Comes with  
additional  
Dark Brown  
lace in box.



Sizes Regular/Wide 37-42. Product detail is subject to change.



Sizes Regular/Wide 37-42. Product detail is subject to change.

The Shannon Fur takes style and comfort to a new level. Added sophistication of faux fur top the outside of the Shannon boot while the inside is lined with luscious faux fur. Fitted also with our coolmax lined cushioned footbed makes for an extremely comfortable boot. The Shannon Fur is also extremely practical, 100% waterproof construction and oiled Nubuck leathers, side zip and gusset allow easy entry and a snug fit when closed and built on our trusted all terrain. Super smart detailing with Tredstep branding and brass studs. The perfect choice at the Barn, the show, or simply out and about.





# SHANNON H<sub>2</sub>O

THE COLLECTION  
**Country**  
by TREDSTEP

The Shannon Boot oozes Elegance and Style while remaining exceptionally practical. 100% waterproof, crafted in sumptuous oiled Nubuck leather with leather cuff and drylex linings, side zip and gusset allow easy entry and a snug fit when closed. Built on our trusted all terrain sole and fitted with our super comfortable coolmax lined footbed. Super smart detailing with Tredstep Branding and brass studs. The perfect choice at the Barn, the show, or simply out and about.



100% waterproof

Detachable tassel

100% waterproof to cuff

Waterproof and Breathable Construction

Heavy Duty YKK Brass Side Zip

Coolmax Lined Cushioned Footbed

All Terrain Outsole



Mahogany

# SPIRIT II

Front Zip

THE COLLECTION  
**Country**  
by TREDSTEP

Cuff leather & check  
padded lining

Double gore  
elastic stretch panel

Oiled Nubuck  
Leather

Contrast stitch  
detail



Coolmax Lined  
Cushioned Footbed

All Terrain Outsole



Dark Oak



Mahogany



Black

Classic Country at its best! The Spirit is perfect for every occasion. Presented in sumptuous oiled nubuck leather with leather cuff and check pattern lining and contrast outstitching. Fitted with a brass front zip and branded top closure, double gore side stretch panels and mounted on our trusted all terrain outsole with a coolmax lined cushioned footbed making for an extremely comfortable boot.





Mahogany

Another Country Classic which is perfect for every occasion. Presented in sumptuous oiled nubuck leather with leather cuff and check pattern lining. Fitted with front lacing and a handy rear zip. Simply adjust the lace to obtain the perfect fit and then use the rear zip for daily entry. Sporting double gore side stretch panels and mounted on our trusted all terrain outsole with a coolmax lined cushioned footbed making for an extremely comfortable boot.

# SPIRIT

Side Zip with Front Lace

THE COLLECTION  
**Country**  
by TREDSTEP



The perfect boot at the barn or about the country, waterproof oiled Nubuck leathers, styled as a front lace boot, but with the added benefit of a side zip, the perfect easy country style that can be worn anywhere. Leather cuff and plaid linings, built on our trusted all terrain sole and fitted with our super comfortable coolmax lined footbed. Super smart detailing with Tredstep Branding and double stitch details. The perfect choice at the Barn, the show, or simply out and about.

**Cleaning:** brush off excess dirt and apply beeswax or similar product to maintain healthy and supple leather.



Mahogany



THE COLLECTION  
**Country**  
by TREDSTEP

**SPIRIT**  
Pull on

The perfect boot at the barn or about the country, waterproof oiled Nubuck leathers, styled as a classic pull on boot, the perfect easy country style that can be worn anywhere. Leather cuff and plaid linings, built on our trusted all terrain sole and fitted with our super comfortable coolmax lined footbed. Super smart detailing with Tredstep Branding and double stitch details. The perfect choice at the Barn, the show, or simply out and about.

**Cleaning:** brush off excess dirt and apply beeswax or similar product to maintain healthy and supple leather.



# LIFFEY

## Pull on - Short Boot

THE COLLECTION  
**Country**  
by TREDSTEP

The perfect boot at the barn or about the country, 100% waterproof construction in oiled Nubuck leathers. Styled as a classic pull on boot with the added benefit that it is waterproof to the bottom of the side elastic. Built on our extreme country outsole you can feel confident that your boots will hold up to the rigors of life on the farm. Fitted with our coolmax lined cushioned footbed adds that extra comfort for all day wearing.



Mahogany



# APPAREL

Tredstep apparel is a culmination of creativity and equestrian experience bringing high performance clothing to equestrian athletes of all levels.

Transforming traditional styles into contemporary designs, maximising performance while remaining sophisticated and elegant at all times.

# TREDSTEP HONOUR COATS



Tailored using our exclusive high-performance light weight stretch i-cool fabric with silent motion and 360 degree stretch. The Solo Honour is the epitome of high performance in a show coat, incorporating mesh under sleeves, articulated arms, a hidden front zip with 3 elegant buttons and matching collars and cuff details.



UK	4	6	8	10	12	14	16	18
GERMANY	32	34	36	38	40	42	44	46
USA	0	2	4	6	8	10	12	14



# TREDSTEP AIRLITE COATS



Stay super cool in the all new Tredstep Airlite Competition coat. A combination of Tredstep's exclusive high-performance light weight stretch fabric with barrier mesh sleeves and side panels provide the ultimate in competition wear during the hot months.

Available in: BLACK  
NAVY



UK	8	10	12	14	16
GERMANY	36	38	40	42	44
USA	4	6	8	10	12







# TREDSTEP VISION COATS



“Cool Graceful Performance”

Piped contrast collar  
(and cuff trims)

Light weight Italian  
i-cool, silent stretch fabric

Mesh  
underarms

Articulated  
sleeves

Double  
vented

Machine  
Washable

Inline discrete  
pockets

Contrast Snap  
buttons

GREY  
Hidden center zip

UK	4	6	8	10	12	14	16	18	20
GERMANY	32	34	36	38	40	42	44	46	48
USA	0	2	4	6	8	10	12	14	16



BLACK



BURGUNDY



NAVY





# TREDSTEP SHOW TIME



## “Cool Graceful Performance”

The Solo Showtime Coat combines the latest in fabric technologies with Traditional elegance and style. Tailored using our exclusive Italian high performance Cool Touch fabric featuring silent motion, 360 degree stretch and a moisture wicking lightweight mesh lining.

Subtle detailing includes tonal suede collars, center front piping and contrast trims on vents and pockets are presented within a gracefully refined silhouette, ideal for use in the Hunter, Equitation or Jumper ring.

Machine washable.

### FABRIC FEATURES

4 way stretch fabric

Moisture management

Dual layer construction

Soft touch



Breathable

Water repellent

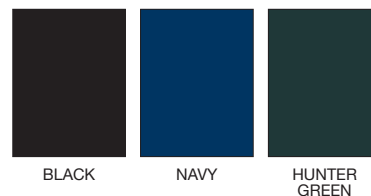
Machine washable

Soundless motion

### COAT SIZES

US	00	0	2	4	6	8	10	12
UK	4	6	8	10	12	14	16	18
GERMANY		32	34	36	38	40	42	44
FRANCE		34	36	38	40	42	44	46
ITALY		36	38	40	42	44	46	48

### COLOURS



BLACK

NAVY

HUNTER GREEN

# DRESSAGE TAILS



Exquisite Tailored Silhouette

Lightweight Italian Cool Touch, silent stretch fabric



Reversible Vest Points

Stretch Lining



BLACK

NAVY

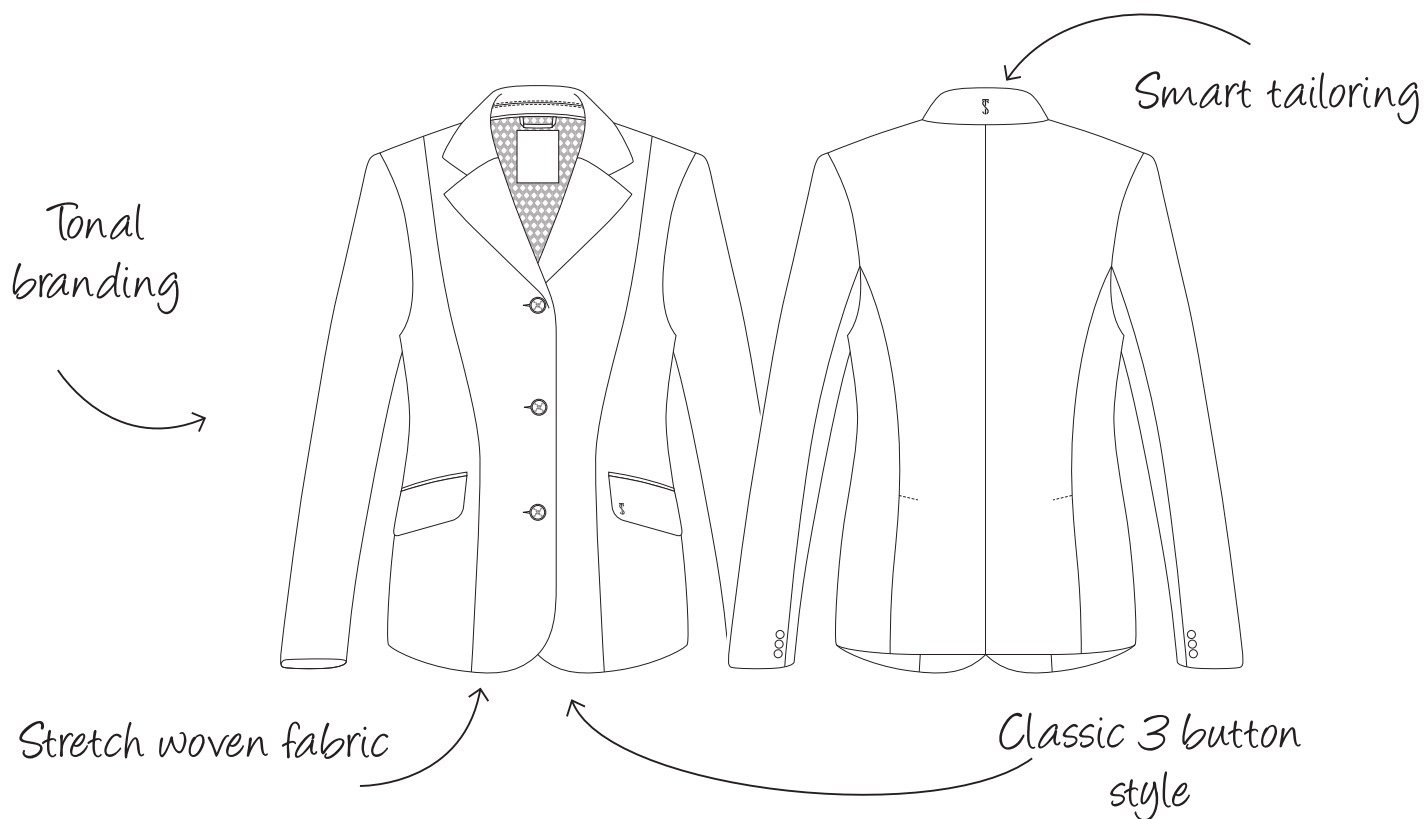
Faux leather lined weighted tails

UK	6	8	10	12	14
GERMANY	34	36	38	40	42
USA	2	4	6	8	10



# TREDSTEP STYLE COAT

Classic Tailoring with Style and Performance



BLACK

NAVY

UK	2	4	6	8	10	12	14	16	18	20	22
GERMANY	30	32	34	36	38	40	42	44	46	48	50
USA	00	0	2	4	6	8	10	12	14	16	18

# TREDSTEP SPORT JACKET (GENTS)

“Classic Tailoring with Style and Performance”



Classic Gents Tailoring



4 branded buttons



Mesh lining

Lightweight Italian Cool Touch  
silent stretch fabric



UK	36	38	40	42	44
GERMANY	46	48	50	52	54
USA	36	38	40	42	44

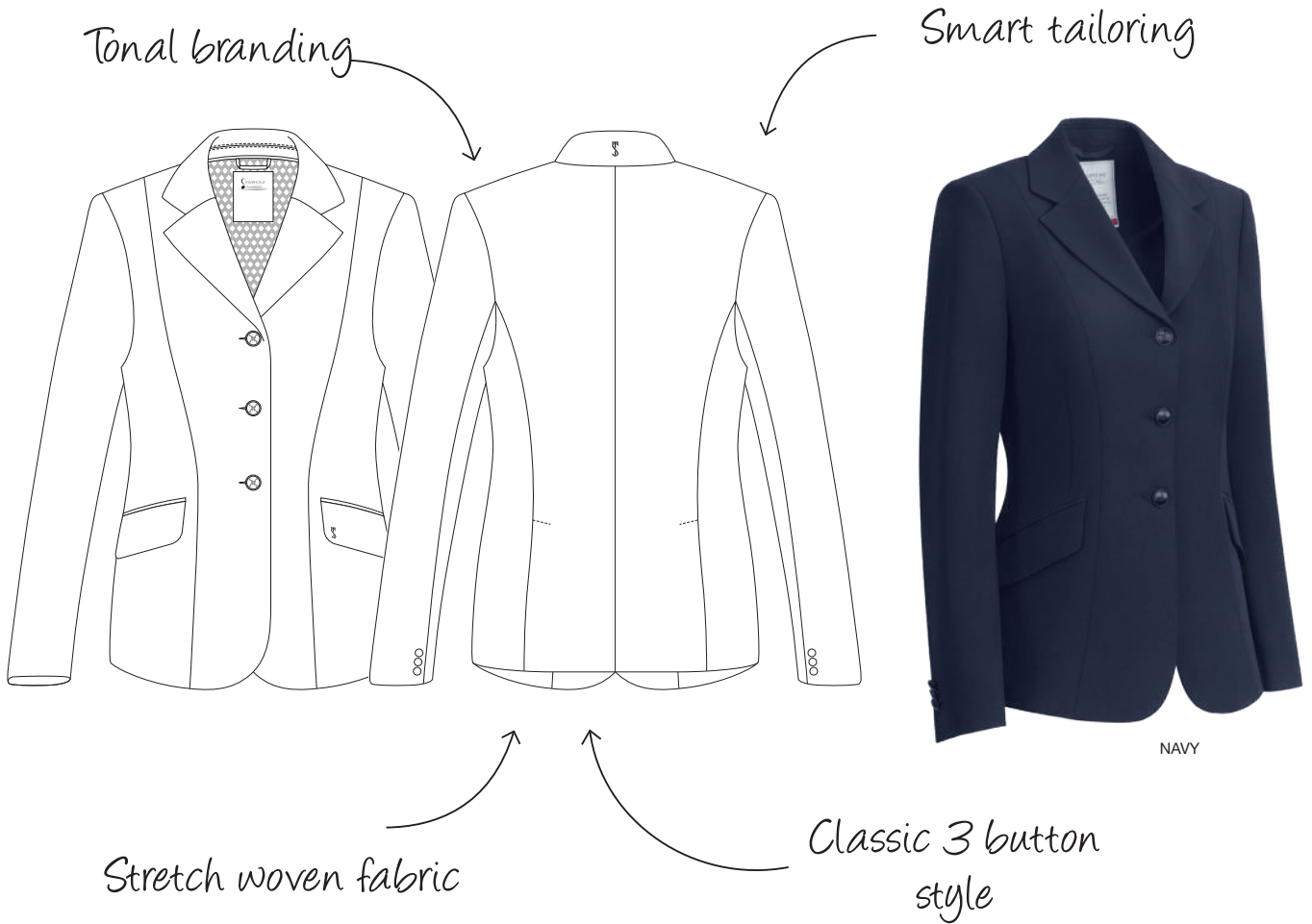
COLOUR BLACK

 Peter Wyld  
USA Olympic Medalist

Product detail is subject to change.



# TREDSTEP STYLE JUNIOR JACKET



UK & USA	8	10	10+	12	12+	14
----------	---	----	-----	----	-----	----

Detailed size chart at the end of the brochure.

## JUNIOR COLLECTION

THE RENAISSANCE COLLECTION

*Donatello* **SQ II** *Junior*  
by TREDSTEP



SYMPHONY PARIS JR



PURPLE HAZE



NEBULA BLUE

WHITE ANGEL

Product detail is subject to change.

# VOLTE II BREECHES

*"Pure Elegance"*



*New revolutionary Japanese Nylon 4 way stretch fabric*

*Curved Anatomical  
Waistband*

*Non Slip Silicone inner  
waistband*

*3 button front closure*

*Crystal detailing*



*High fit waistband European Dressage Style*

<b>UK &amp; USA</b>	24R	26R	28R	30R	32R	34R
<b>GERMANY</b>	36R	38R	40R	42R	44R	46R



# ROSA II KNEE PATCH BREECHES

*"Dress to perform with confidence and style"*

Incredible Motion Fit Design in a modified mid rise

Non slip silicone inner waistband detail

Updated detailing and colours

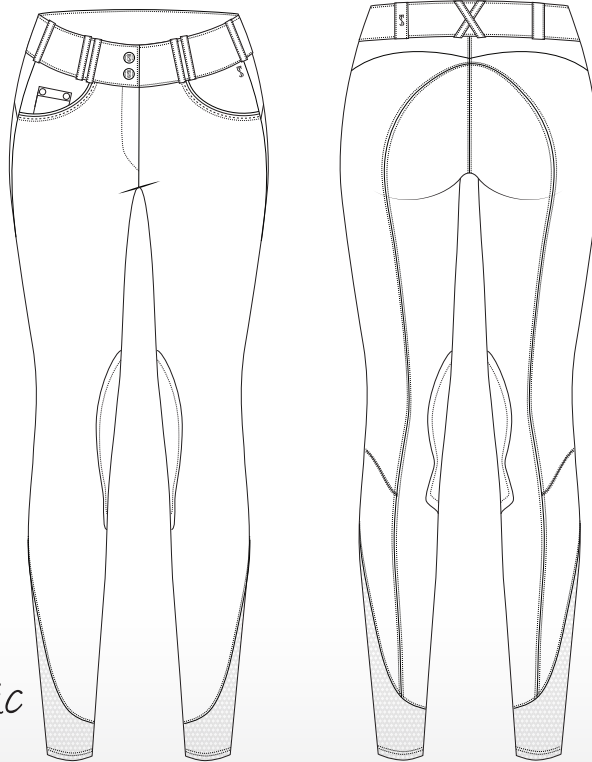
Contrast stitching

Tonal articulated knee patch

Schoeller NanoSphere stain blocker

Soft touch woven Evolution 4 way stretch Fabric

Sheer Cooling mesh cuffs



<b>UK &amp; USA</b>	24R	26R	28R	30R	32R	34R
<b>GERMANY</b>	36R	38R	40R	42R	44R	46R

Product detail is subject to change.



TAN

WARM GREY

NEBULA BLUE

# NERO II BREECHES SILICONE KNEE PATCH



*"Top performance for every day"*

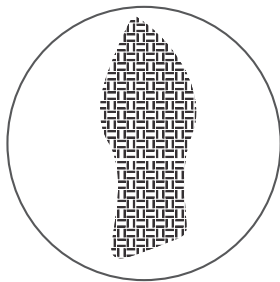
*Incredible Motion Fit  
Design in a modified mid  
rise*

*meryl® actisystem™  
4 way stretch woven  
fabric*

*Curved  
Anatomical  
Waistband*



*Silicone  
knee  
patch*



*Integrated stretch  
cuffs*

*Designed for  
everyday use*

*Super  
flattering*

UK & USA	24R	26R	28R	30R	32R	34R
GERMANY	36R	38R	40R	42R	44R	46R



# NERO II BREECHES SILICONE FULL SEAT



*"Top performance for every day"*

*Incredible Motion Fit  
Design in a modified mid  
rise*

*meryl® actisystem™  
4 way stretch woven  
fabric*

*Curved Anatomical  
Waistband with "V"  
close panel fitting*



NAVY

GREY

WHITE

*Integrated stretch  
cuffs*

*Designed for everyday  
use*

UK & USA	24R	26R	28R	30R	32R	34R
GERMANY	36R	38R	40R	42R	44R	46R

# TREDSTEP VERDE GENTS BREECHES



"Style, Technology and Performance"



Soft touch woven  
Evolution  
4 way stretch Fabric

Comfortable  
and generous  
pockets

Buttoned back pockets

Schoeller  
NanoSphere  
stain blocker



TAN



WHITE



CHARCOAL

Classic Gents  
styling

Sheer Cooling mesh  
cuffs

UK & USA	28R	30R	32R	34R	36R	38R	40R
GERMANY	44R	46R	48R	50R	52R	54R	56R



# TEMPO AIR TIGHTS

*Shaped to fit, flatter and perform*

*Summer Weight*



Introducing our new True Fit waistband, all shaping, and seaming removed from the front and sides and placed to the back. This relieves any possible discomfort from pressure points on the side and front, providing a more comfortable flattering fit with increased tummy control.



GRAPHITE GREY  
TRIM: VALLARTA BLUE

UK & USA	24R	26R	28R	30R	32R	34R
GERMANY	36R	38R	40R	42R	44R	46R

STEEL BLUE  
TRIM: BARBURY



# TEMPO COMPRESSION TIGHTS



A great staple piece for every rider's wardrobe, the ultimate performance tights which will keep riders comfortable all day long.

*Breech button waistband*      *Silver pocket branding*



*Shaped retention seaming around the seat*

BLACK

NAVY

UK & USA	24R	26R	28R	30R	32R	34R
GERMANY	36R	38R	40R	42R	44R	46R

Product detail is subject to change.



# ALLEGRO AIR TIGHT

*Most Flattering Waistband Ever*

*Summer Weight*



Introducing our new True Fit waistband, all shaping, and seaming removed from the front and sides and placed to the back. This relieves any possible discomfort from pressure points on the side and front, providing a more comfortable flattering fit with increased tummy control.

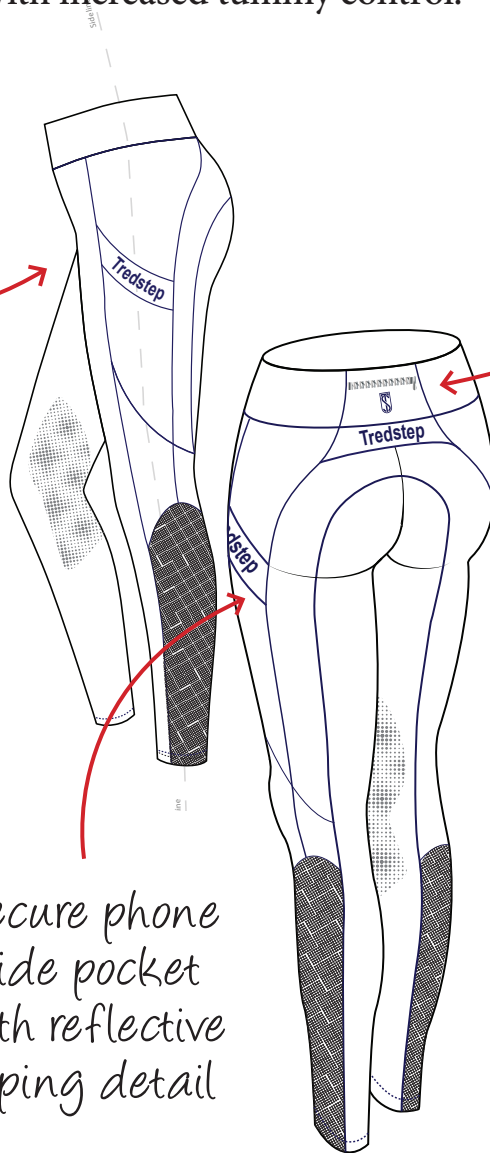
*Shape retention seaming around the seat*

*Zip pocket*

*Knee patch Stratus Grip print design*

*Super flattering compression body forming fabric*

*Secure phone side pocket with reflective piping detail*



UK & USA	24R	26R	28R	30R	32R	34R
GERMANY	36R	38R	40R	42R	44R	46R

ANTHRACITE

BLACK

PEACOCK NAVY

TAUPE



Product detail is subject to change.

# ALLEGRO COMPRESSION TIGHT



Comfort and style combined. Super flattering body forming compression fabric, comfort seaming, reflective piping detail and a secure pocket for your phone.

Shaped retention seaming around the seat

Comfort seaming

Super flattering compression body forming fabric

Full seat Stratus Grip print design

Secure phone side pocket with reflective piping detail



UK & USA	24R	26R	28R	30R	32R	34R
GERMANY	36R	38R	40R	42R	44R	46R

Product detail is subject to change.

CHARCOAL WITH BLACK DETAIL

BLACK WITH NAVY DETAIL

NAVY WITH BLACK DETAIL





# BREECH SUMMARY

EXTREME KP



VOLTE II



ROSA II KP



ROSA II FS



NERO II KP



NERO II FS



VERDE GENTS



TEMPO AIR TIGHTS



ALLEGRO AIR TIGHTS



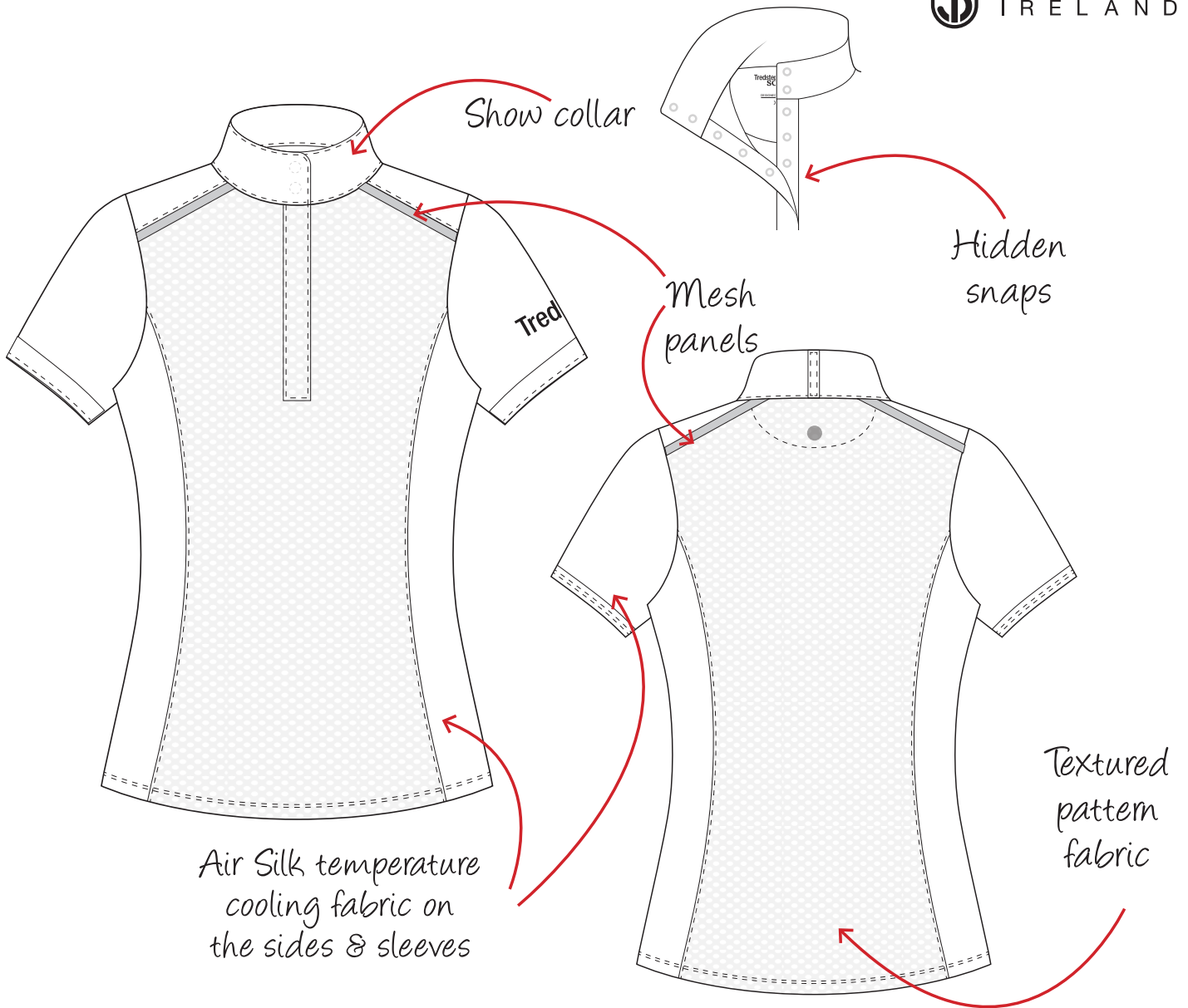
TEMPO COMPRESSION TIGHTS



ALLEGRO COMPRESSION TIGHTS



# PEARL COMPETITION SHIRT



WHITE



LUNAR GREY

SIZE	XS	S	M	L	XL
UK	4-6	8	10-12	14	16
USA	0-2	4	6-8	10	12



# PARIS COMPETITION SHIRT



High performance nylon pique fabric

Crisp Cotton Slanted Collar

Birds eye mesh under sleeves



Print details on collar & cuff lining

Branded buttons & snaps

Contrast branding

Product detail is subject to change.

SIZE	XS	S	M	L	XL
UK	4-6	8	10-12	14	16
USA	0-2	4	6-8	10	12

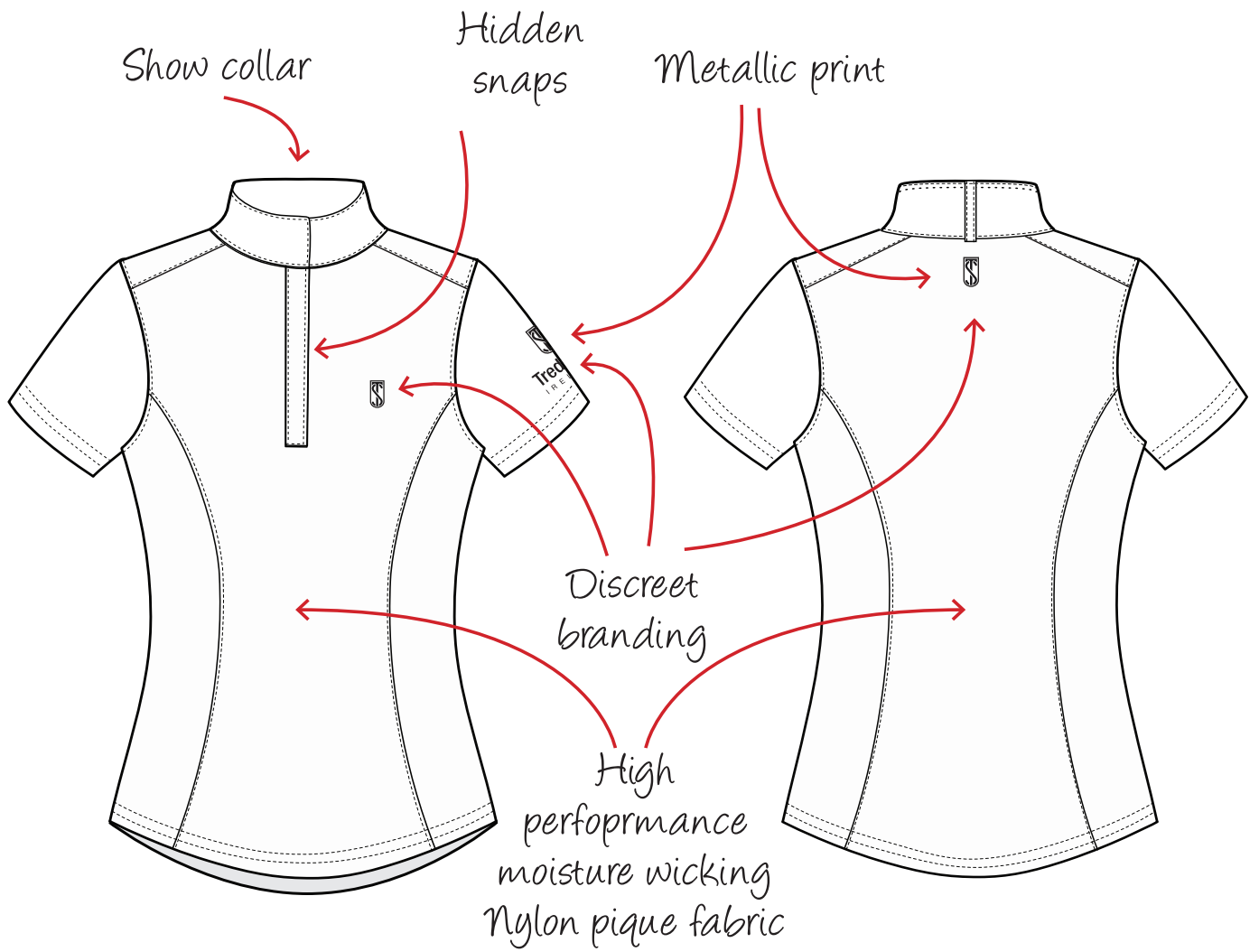
NEBULA BLUE



WHITE ANGEL



# NAPOLI COMPETITION SHIRT



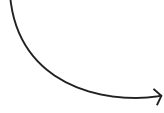
Only in white

SIZE	XS	S	M	L	XL
UK	4-6	8	10-12	14	16
USA	0-2	4	6-8	10	12



# GENTS COMPETITION SHIRT

*Branded buttons*



*Classic Crisp Cotton  
button down Collar*



*Contrast branding*



*Tie strap*



*Air Silk and Cooling Jade  
temperature reducing fabric*



NAVY

WHITE

SIZE	XS	S	M	L	XL

SUN CHIC 50

PERMANENT SUN PROTECTION BUILT INTO FABRIC

UVA 99.2%

UVB 99.6%

UPF rating 50

*Tasteful  
branding*



GOLDEN DREAM



MELLOW MAUVE



BLEACHED DENIM

*Ultra  
comfortable  
cooling fabric*



Camilla Speirs  
Ireland, Olympic Rider

SIZE	XS	S	M	L	XL
UK	4-6	8	10-12	14	16
USA	0-2	4	6-8	10	12



A light base layer to increase warmth without adding weight or bulk. Made using Easy Warm Yarn, a revolutionary new fabric which has a special core-cell structure, providing enhanced thermal insulation. This top is ideal for layering under riding clothes without restricting the riders range of movement.



DOVE GREY



STEEL GREY



SIZE	XS	S	M	L	XL
UK	4-6	8	10-12	14	16
USA	0-2	4	6-8	10	12

# FUTURA SPORT TOP

*Look Sharp, Keep Cool*



 **Caroline Powell**  
New Zealand Olympic Medalist

*Incredible moisture management*

*Air Silk temperature cooling fabric*

*Contrast stitching and branding*

*Ultra comfortable in all weather and riding conditions*

*The perfect base layer or schooling top*



*Odour protection*

CARMINE ROSE

PEACOCK NAVY

WHITE

BLACK

SIZE	XS	S	M	L	XL
UK	4-6	8	10-12	14	16
USA	0-2	4	6-8	10	12



# PERFORMANCE POLOS



CAPRI

OLYMPIAN BLUE

VERY BERRY

*Incredible high performance nylon pique fabric*

*Fresh spring contrast colours and details*

### LADIES POLO SIZES

SIZE	XS	S	M	L	XL
UK	4-6	8	10-12	14	16
USA	0-2	4	6-8	10	12

## GENTS POLO

*Cool Style*

*Soft cool to the touch*



SHADOW

NAVY

*Smart and stylish*

### GENTS POLO SIZES

UK & USA	XS	S	M	L	XL
----------	----	---	---	---	----

# CALYPSO JACKET

**GUN METAL**

**NEW**



Super cool & snug warmth

Breathable



Stylish & flattering shape

Zip pockets

Detachable hood

Side stretch panels



2 way zipper

High grade PrimaLoft Gold insulation

Faux fur lined for added comfort



Tredstep zipper branding detail

SIZE	XS	S	M	L	XL
UK	4-6	8	10-12	14	16
USA	0-2	4	6-8	10	12



# CALYPSO GILET

**GUN METAL**

**NEW**



*Super cool  
& snug warmth*



*Breathable*

*Stylish &  
flattering  
shape*



*Zip  
pockets*

*Side  
stretch panels*

*2 way zipper*

*High grade  
PrimaLoft Gold  
insulation*



*Faux lined  
for added  
comfort*

*Tredstep  
zipper  
branding  
detail*

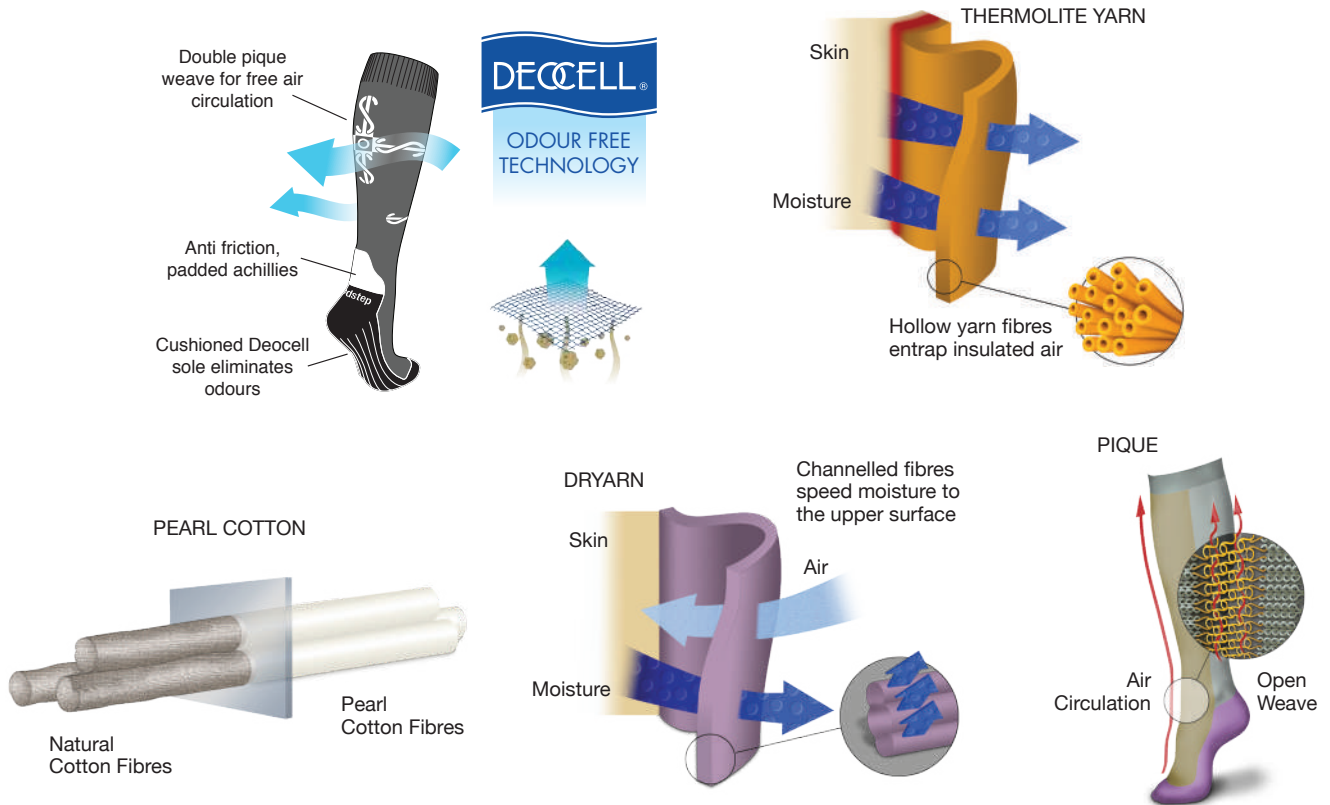
SIZE	XS	S	M	L	XL
UK	4-6	8	10-12	14	16
USA	0-2	4	6-8	10	12

# TREDSTEP SOCKS

When a material touches your skin you must look to the fabric...

Our Sock collection consists of the Solo Pro, Pure Air Cool and the Winter Merino. Within the various styles we use nature's best in pure Pearl Cotton with its silk like feel and the latest in performance engineered yarns:

## Fabric Technology



## PRO SOCKS

Anti friction Tencil yarns provide additional comfort and protection to the Achilles and a cushioned foot utilising revolutionary Deocell fibres neutralize odours while wicking moisture, humidity and perspiration away from the skin.

Sizes 36 - 40: Black, Grey, Pink, Navy

Sizes 41 - 45: Black, Grey, Navy





# PURE AIR COOL

Pearl Cotton in the leg with an added Pique weave panel in upper foot and foreleg for increased ventilation and Dryarn in the foot wicking moisture, humidity and perspiration away from the skin. These fabrics combined and incorporated in an anatomically designed fit will provide an Air Cooled and cushioned feeling without bulk maintaining an all day fresh feeling.

Sizes 36 - 40: Violet, Navy, Black, Classic Blue

Sizes 41 - 45: Navy, Black



Violet

Classic Blue

Navy

Black

# MERINO WINTER

Tredstep's Winter Merino is a unique insulating Thermolite yarn combined with merino wool which creates an insulating layer of warmth against winter cold. The naturally anti-microbial merino wool allows perspiration to wick away keeping the foot dry, warm and the odour free. Performance engineered design including ankle and foot stretch bands allow maximum flexion and an anatomically shaped footbed with a padded Achilles gives extra comfort and support.

Sizes 36 - 42: Charcoal, Denim, Violet, Navy



Charcoal

Denim

Violet

Navy

# TREDSTEP GLOVES

Our gloves are unlike any others, they have been designed without compromise to meet the needs of your specific discipline. We have combined the latest fabric technologies and innovative design to create a collection of the highest standards in fit, comfort, style and performance across all disciplines in all weather conditions.



## JUMPER PRO

A technically advanced glove incorporating Tredstep's patented FlexiGrip palm design and an anatomical cuff. These combined with the use of Air Fibre ensure a flexible, comfortable and secure contact on the reins at all times



BLACK

**FLEXI**grip 



## SHOW HUNTER

Modern technology with classic styling. Lamb Skin Leather combined with DigiTak and AirFibre produce a glove which on the outside looks like a Traditional Leather Classic but on the inside has all the benefits of the latest materials. Tredstep's patented FlexiGrip and anatomical cuff ensure incredible comfort and performance.



BROWN

**digi** TAK 



## DRESSAGE PRO

Classic incorporating Tredstep's patented FlexiGrip design with the finest lamb skin leather and True Touch synthetic leather on the palm ensure a flexible secure contact. Anatomical cuff with stretch knuckle panels and reinforced fingers for use with double bridles completes this design classic.



BLACK

WHITE

**FLEXI**grip 



# EVENTER

A true performance glove with Tredstep's exclusive WetTec super grip palm that increases contact in wet conditions. Tredstep's patented Flexi Grip palm design and extended anatomical cuff ensures great flexibility and an incredible fit.

WET-TEC



BLACK



# SUMMER COOL

AirFibre palm with an elastic back and anatomically designed lightweight cuff for secure contact combining incredible comfort and flexibility. Incorporates a towel fabric thumb to wipe away perspiration.

AIR fibre



BLACK



# WINTER SILK

A none bulky winter glove combining Fusion Grip with a Silk lining ensuring constant thermo regulation. Tredstep's Patented Flexigrip design and the extended anatomical neoprene cuff provides flexibility of movement with a snug secure rein contact.

FLEXI grip

3M Thinsulate INSULATION



BLACK



BLACK

# POLAR H<sub>2</sub>O

The Polar H<sub>2</sub>O is 100% waterproof and super warm. Designed for all-weather riding and incorporating Tredstep's exclusive Fusion Grip palm and Air Fibre stretch back with an extended anatomical wrist and secure Velcro closure. The Polar H<sub>2</sub>O combines 40g Thinsulate by 3M with a fully waterproof and breathable membrane that ensures warmth and comfort for the rider, even in the worst conditions.

3M Thinsulate INSULATION

FUSION GRIP

# Textile Technology

## FLEXIgrip

Patented flexion design construction between the palm and fingers. This unique design provides increased flexibility and secure contact with the rein.

## TRUE TOUCH

Engineered synthetic leather increase feel and sensitivity in both wet and dry conditions. Providing secure contact with a soft and supple touch.

## FUSION GRIP

High Tec performance stretchy synthetic leather which is soft to the touch yet highly durable at the same time.

## AIR fibre

A breakthrough in synthetic suede providing increased sensitivity and control with increased abrasion resistance for durability.

## WET-TEC

Revolutionary micro fibre, which increases contact and grip in wet conditions. This engineered fibre breathes and wicks moisture away ensuring a safe secure feel.

## digi TAK

Digitally tackified synthetic leather which increases your control and grip on the reins.

## climatik technologies

Revolutionary thermo regulating fabric maintaining an even environment.

## 3M Thinsulate INSULATION

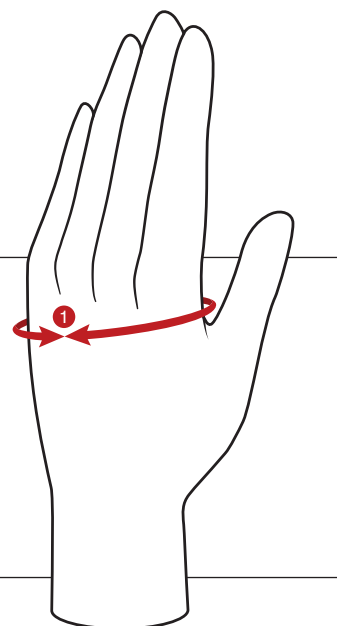
40g Thinsulate by 3M with a fully waterproof and breathable membrane that ensures warmth and comfort

# GLOVE SIZES

### MEASURING YOUR HAND

Measure around your hand at widest part (1), excluding thumb. The number of inches should equal your glove size.

INCHES	6	6.5	7	7.5	8	8.5
CM	15.2	16.5	17.8	19	20.3	21.5



# TREDSTEP CURVE BELTS

The Tredstep Curve belt uniquely exhibits Tredstep Ireland's expertise in ensuring beautiful lines and shaping integrated with tradition and premium materials. The Tredstep Curve Belt complements the tailoring associated with signature Definition Waistband, enabling a flattering silhouette highlighted by luxurious leather and striking detailing.



Black leather - Black Trim



Black leather - Blue Trim



Havana leather - Pink Trim



Havana leather - Chestnut Trim



Chestnut leather - Havana Trim



Havana leather - Hunter Green Trim

# TREDSTEP FLEX BELTS

Tredstep Ireland's customary use of stretch is fantastically expressed in the Tredstep Flex Belt. An attractive combination of fine quality leather and impressive elastic colour combinations, the Tredstep Flex belt is an attractive addition to any outfit.



Black, Blue/Red/White



Havana, Blue/Red/White



Havana, Angora/Cerise/Green



Black, Hunter Green/Red/Cream



Havana, Hunter Green/Red/Cream



Black, Violet/White



Havana, Magenta/Blue

# BELTS SIZES

EU & UK	24	26	28	30	32	34
---------	----	----	----	----	----	----



# DONATELLO III SIZES (INCH)

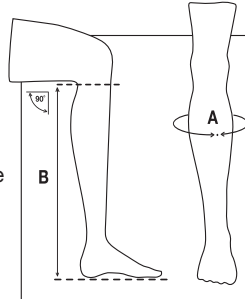
**1.** Choose foot size

**BLUE: STOCKED - HIGH LEVEL**

**GREEN: STOCKED - LOW LEVEL**

**YELLOW: TO ORDER 12 WEEK LEADTIME**

**2.** Measure calf



**Calf Measurement (A)**

1. While wearing breeches measure around the widest part of your calf (A)

**Height Measurement (B)**

1. Place bare foot on the ground  
2. Bend upper leg to 90° angle  
3. Measure from floor to underside of upper leg (B)

**3.** Check Leadtime (Colours)

DONATELLO III TALL BOOT (INCH)											
FOOT SIZE		CALF (A)									HEIGHT (B)
US	EU	XX SLIM	X SLIM	SLIM	REG	REG +	MED	MED +	FULL	FULL +	SHORT
5.5 - 6	36		11 1/2	12 1/4	12 3/4	13 1/2	14				16 1/4
6.5 / 7	37		11 1/2	12 1/4	12 3/4	13 1/2	14	14 1/2	15 1/4	15 3/4	16 1/2
7.5	38		12 1/4	12 3/4	13 1/2	14	14 1/2	15 1/4	15 3/4	16 1/4	16 3/4
8 / 8.5	39		12 1/2	13	13 1/2	14 1/4	14 3/4	15 1/4	16	16 1/2	17 1/4
9	40			13 1/2		14 1/2		15 3/4		17	17 1/4
9.5 / 10	41			13 1/2		14 1/2		15 3/4			17 1/2

DONATELLO III TALL BOOT (INCH)											
FOOT SIZE		CALF									HEIGHT
US	EU	XX SLIM	X SLIM	SLIM	REG	REG +	MED	MED +	FULL	FULL +	REG
5.5 - 6	36	11	11 1/2	12 1/4	12 3/4	13 1/2	14				17 1/4
6.5 / 7	37	11	11 1/2	12 1/4	12 3/4	13 1/2	14	14 1/2	15 1/4	15 3/4	17 3/4
7.5	38	11 1/2	12 1/4	12 3/4	13 1/2	14	14 1/2	15 1/4	15 3/4	16 1/4	18
8 / 8.5	39	11 3/4	12 1/2	13	13 1/2	14 1/4	14 3/4	15 1/4	16	16 1/2	18 1/4
9	40	12 1/4	12 3/4	13 1/2	14	14 1/2	15 1/4	15 3/4	16 1/4	17	18 1/2
9.5 / 10	41	12 1/4	12 3/4	13 1/2	14	14 1/2	15 1/4	15 3/4	16 1/4	17	18 3/4
10.5	42		13	13 1/2	14 1/4	14 3/4	15 1/4	16	16 1/2	17 1/4	19
M10	43			13 3/4	14 1/4	15					19 1/2
M11	44			14	14 1/2	15 1/4					20
M12	45			14 1/4	14 3/4	15 1/4					20 1/4

DONATELLO III TALL BOOT (INCH)											
FOOT SIZE		CALF									HEIGHT
US	EU	XX SLIM	X SLIM	SLIM	REG	REG +	MED	MED +	FULL	FULL +	TALL
5.5 - 6	36										
6.5 / 7	37	11	11 1/2	12 1/4	12 3/4	13 1/2	14	14 1/2			19
7.5	38	11 1/2	12 1/4	12 3/4	13 1/2	14	14 1/2	15 1/4	15 3/4	16 1/4	19
8 / 8.5	39	11 3/4	12 1/2	13	13 1/2	14 1/4	14 3/4	15 1/4	16	16 1/2	19 1/2
9	40	12 1/4	12 3/4	13 1/2	14	14 1/2	15 1/4	15 3/4	16 1/4	17	19 3/4
9.5 / 10	41	12 1/4	12 3/4	13 1/2	14	14 1/2	15 1/4	15 3/4	16 1/4	17	20
10.5	42		13	13 1/2	14 1/4	14 3/4	15 1/4	16	16 1/2	17 1/4	20 1/4
M10	43			13 3/4	14 1/4	15					20 3/4
M11	44			14	14 1/2	15 1/4					21
M12	45			14 1/4	14 3/4	15 1/4					21 1/2

# DONATELLO III SIZES (CM)

BLUE: STOCKED - HIGH LEVEL

GREEN: STOCKED - LOW LEVEL

YELLOW: TO ORDER 12 WEEK LEADTIME

DONATELLO III TALL BOOT (CM)											
FOOT SIZE		CALF									HEIGHT SHORT
US	EU	XX SLIM	X SLIM	SLIM	REG	REG +	MED	MED +	FULL	FULL +	
5.5 - 6	36		29.5	31	32.5	34	35.5				41
6.5 / 7	37		29.5	31	32.5	34	35.5	37	38.5	40	42
7.5	38		31	32.5	34	35.5	37	38.5	40	41.5	42.5
8 / 8.5	39		31.5	33	34.5	36	37.5	39	40.5	42	43.5
9	40			34		37		40		43	44
9.5 / 10	41			34		37		40			44.5

DONATELLO III TALL BOOT (CM)											
FOOT SIZE		CALF									HEIGHT REG
US	EU	XX SLIM	X SLIM	SLIM	REG	REG +	MED	MED +	FULL	FULL +	
5.5 - 6	36	28	29.5	31	32.5	34	35.5				44
6.5 / 7	37	28	29.5	31	32.5	34	35.5	37	38.5	40	45
7.5	38	29.5	31	32.5	34	35.5	37	38.5	40	41.5	45.5
8 / 8.5	39	30	31.5	33	34.5	36	37.5	39	40.5	42	46.5
9	40	31	32.5	34	35.5	37	38.5	40	41.5	43	47
9.5 / 10	41	31	32.5	34	35.5	37	38.5	40	41.5	43	47.5
10.5	42		33	34.5	36	37.5	39	40.5	42	43.5	48.5
11	43			35	36.5	38					49.5
11.5	44			35.5	37	38.5					50.5
12	45			36	37.5	39					51.5

DONATELLO III TALL BOOT (CM)											
FOOT SIZE		CALF									HEIGHT TALL
US	EU	XX SLIM	X SLIM	SLIM	REG	REG +	MED	MED +	FULL	FULL +	
5.5 - 6	36										
6.5 / 7	37	28	29.5	31	32.5	34	35.5	37			48
7.5	38	29.5	31	32.5	34	35.5	37	38.5	40	41.5	48.5
8 / 8.5	39	30	31.5	33	34.5	36	37.5	39	40.5	42	49.5
9	40	31	32.5	34	35.5	37	38.5	40	41.5	43	50
9.5 / 10	41	31	32.5	34	35.5	37	38.5	40	41.5	43	50.5
10.5	42		33	34.5	36	37.5	39	40.5	42	43.5	51.5
11	43			35	36.5	38					52.5
11.5	44			35.5	37	38.5					53.5
12	45			36	37.5	39					54.5

## DONATELLO III JUNIOR

INCH

DONATELLO III - JUNIOR (INCH)			
US	EU	REG	REG HEIGHT
5.5 - 6	36	11 1/2	16 1/4
6.5 - 7	37	11 1/2	16 1/2
7.5	38	11 1/2	16 1/2
8 - 8.5	39	11 1/2	16 1/2

DONATELLO III - JUNIOR (INCH)			
US	EU	SLIM	TALL HEIGHT
5.5 - 6	36	10 1/2	17 1/4
6.5 - 7	37	10 1/2	17 1/2
7.5	38	10 1/2	17 1/2
8 - 8.5	39	10 1/2	17 1/2

CM

DONATELLO III - JUNIOR (CM)			
US	EU	REG	REG HEIGHT
5.5 - 6	36	29.5	41.5
6.5 - 7	37	29.5	42
7.5	38	29.5	42
8 - 8.5	39	29.5	42

DONATELLO III - JUNIOR (CM)			
US	EU	SLIM	TALL HEIGHT
5.5 - 6	36	25.5	43.5
6.5 - 7	37	25.5	44.5
7.5	38	25.5	44.5
8 - 8.5	39	25.5	44.5

# MEDICI II & VASARI SIZES (INCHES)

BLUE: STOCKED - HIGH LEVEL

GREEN: STOCKED - LOW LEVEL

YELLOW: TO ORDER 12 WEEK LEADTIME

MEDICI II & VASARI TALL BOOTS (INCH)											
FOOT SIZE		CALF									HEIGHT
US	EU	XX SLIM	X SLIM	SLIM	REG	REG +	MED	MED +	FULL	FULL +	REG
5.5 - 6	36	11 1/2	11 3/4	12 1/4	12 1/2	13 1/4	13 3/4	14 1/4	15		17 1/4
6.5 / 7	37	11 1/2	12	12 1/2	12 3/4	13 1/2	14	14 1/2	15 1/4		17 3/4
7.5	38	11 1/2	12	12 1/2	12 3/4	13 1/2	14	14 1/2	15 1/4		18
8 / 8.5	39	11 1/2	12	12 1/2	12 3/4	13 1/2	14	14 1/2	15 1/4	15 3/4	18 1/4
9	40	12	12 1/2	12 3/4	13 1/2	14	14 1/2	15 1/4	15 3/4	16 1/4	18 1/2
9.5 / 10	41	12 1/2	12 3/4	13 1/2	14	14 1/2	15 1/4	15 3/4	16 1/4		18 3/4
10.5	42		13 1/2	14	14 1/2	15 1/4	15 3/4	16 1/4			19
M10	43		13 1/2	14	14 1/2	15 1/4	15 3/4				19 1/2
M11	44			14 1/4	14 3/4	15 1/4	16				20
M12	45			14 1/4	15	15 1/2	16 1/2				20 1/4

MEDICI II & VASARI TALL BOOTS (INCH)											
FOOT SIZE		CALF									HEIGHT
US	EU	XX SLIM	X SLIM	SLIM	REG	REG +	MED	MED +	FULL	FULL +	TALL
5.5 - 6	36	11 1/2	11 3/4	12 1/4	12 1/2	13 1/4	13 3/4	14 1/4	15		18 1/2
6.5 / 7	37	11 1/2	12	12 1/2	12 3/4	13 1/2	14	14 1/2	15 1/4		19
7.5	38	11 1/2	12	12 1/2	12 3/4	13 1/2	14	14 1/2	15 1/4		19
8 / 8.5	39	11 1/2	12	12 1/2	12 3/4	13 1/2	14	14 1/2	15 1/4	15 3/4	19 1/2
9	40	12	12 1/2	12 3/4	13 1/2	14	14 1/2	15 1/4	15 3/4	16 1/4	19 3/4
9.5 / 10	41	12 1/2	12 3/4	13 1/2	14	14 1/2	15 1/4	15 3/4	16 1/4		20
10.5	42		13 1/2	14	14 1/2	15 1/4	15 3/4	16 1/4			20 1/4
M10	43		13 1/2	14	14 1/2	15 1/4	15 3/4				20 3/4
M11	44			14 1/4	14 3/4	15 1/4	16				21
M12	45			14 1/4	15	15 1/2	16 1/2				21 1/2

MEDICI II & VASARI TALL BOOTS (INCH)											
FOOT SIZE		CALF									HEIGHT
US	EU	XX SLIM	X SLIM	SLIM	REG	REG +	MED	MED +	FULL	FULL +	X-TALL
7.5	38			12 1/2	12 3/4	13 1/2					20 1/4
8 / 8.5	39			12 1/2	12 3/4	13 1/2					20 3/4
9	40			12 3/4	13 1/2	14					20 3/4
9.5 / 10	41			13 1/2	14	14 1/2					21



# MEDICI II & VASARI SIZES (CM)

Please use the charts below to choose the correct size for Medici II & Vasari boots.

**BLUE: STOCKED - HIGH LEVEL**

**GREEN: STOCKED - LOW LEVEL**

**YELLOW: TO ORDER 12 WEEK LEADTIME**

MEDICI II & VASARI TALL BOOTS (CM)											
FOOT SIZE		CALF									HEIGHT
US	EU	XX SLIM	X SLIM	SLIM	REG	REG +	MED	MED +	FULL	FULL +	REG
5.5 - 6	36	29	30	31	32	33.5	35	36.5	38		44
6.5 / 7	37	29.5	30.5	31.5	32.5	34	35.5	37	38.5		45
7.5	38	29.5	30.5	31.5	32.5	34	35.5	37	38.5		45.5
8 / 8.5	39	29.5	30.5	31.5	32.5	34	35.5	37	38.5	40	46.5
9	40	30.5	31.5	32.5	34	35.5	37	38.5	40	41.5	47
9.5 / 10	41	31.5	32.5	34	35.5	37	38.5	40	41.5		47.5
10.5	42		34	35.5	37	38.5	40	41.5			48.5
M10	43		34	35.5	37	38.5	40				49.5
M11	44			36	37.5	39	40.5				50.5
M12	45			36.5	38	39.5	42				51.5

MEDICI II & VASARI TALL BOOTS (CM)											
FOOT SIZE		CALF									HEIGHT
US	EU	XX SLIM	X SLIM	SLIM	REG	REG +	MED	MED +	FULL	FULL +	TALL
5.5 - 6	36	29	30	31	32	33.5	35	36.5	38		47
6.5 / 7	37	29.5	30.5	31.5	32.5	34	35.5	37	38.5		48
7.5	38	29.5	30.5	31.5	32.5	34	35.5	37	38.5		48.5
8 / 8.5	39	29.5	30.5	31.5	32.5	34	35.5	37	38.5	40	49.5
9	40	30.5	31.5	32.5	34	35.5	37	38.5	40	41.5	50
9.5 / 10	41	31.5	32.5	34	35.5	37	38.5	40	41.5		50.5
10.5	42		34	35.5	37	38.5	40	41.5			51.5
M10	43		34	35.5	37	38.5	40				52.5
M11	44			36	37.5	39	40.5				53.5
M12	45			36.5	38	39.5	42				54.5

MEDICI II & VASARI TALL BOOTS (CM)											
FOOT SIZE		CALF									HEIGHT
US	EU	XX SLIM	X SLIM	SLIM	REG	REG +	MED	MED +	FULL	FULL +	X TALL
7.5	38			31.5	32.5	34					51.5
8 / 8.5	39			31.5	32.5	34					52.5
9	40			32.5	34	35.5					53
9.5 / 10	41			34	35.5	37					53.5

# COUNTRY BOOTS - TALL

INCHES

The calf measurements in the charts below are a guide only.

LEGACY, MANOR, PARKLAND				
SIZE	HEIGHT	CALF REG	CALF WIDE	WIDE+ PARKLAND ONLY
37	16 <sup>3</sup> / <sub>4</sub>	13 - 14 <sup>3</sup> / <sub>4</sub>	15 - 16 <sup>3</sup> / <sub>4</sub>	15 <sup>1</sup> / <sub>2</sub> - 17
38	17	13 - 14 <sup>3</sup> / <sub>4</sub>	15 - 16 <sup>3</sup> / <sub>4</sub>	15 <sup>1</sup> / <sub>2</sub> - 17
39	17 <sup>1</sup> / <sub>4</sub>	13 - 14 <sup>3</sup> / <sub>4</sub>	15 - 16 <sup>3</sup> / <sub>4</sub>	15 <sup>1</sup> / <sub>2</sub> - 17
40	17 <sup>3</sup> / <sub>4</sub>	13 - 14 <sup>3</sup> / <sub>4</sub>	15 - 16 <sup>3</sup> / <sub>4</sub>	15 <sup>1</sup> / <sub>2</sub> - 17
41	18	13 - 14 <sup>3</sup> / <sub>4</sub>	15 - 16 <sup>3</sup> / <sub>4</sub>	15 <sup>1</sup> / <sub>2</sub> - 17
42	18 <sup>1</sup> / <sub>4</sub>	13 - 14 <sup>3</sup> / <sub>4</sub>	15 - 16 <sup>3</sup> / <sub>4</sub>	15 <sup>1</sup> / <sub>2</sub> - 17

LIFFEY			
SIZE	HEIGHT	CALF REG	CALF WIDE
37	16 <sup>1</sup> / <sub>2</sub>	13 - 14 <sup>3</sup> / <sub>4</sub>	15 - 16 <sup>3</sup> / <sub>4</sub>
38	16 <sup>3</sup> / <sub>4</sub>	13 - 14 <sup>3</sup> / <sub>4</sub>	15 - 16 <sup>3</sup> / <sub>4</sub>
39	17	13 - 14 <sup>3</sup> / <sub>4</sub>	15 - 16 <sup>3</sup> / <sub>4</sub>
40	17 <sup>1</sup> / <sub>2</sub>	13 - 14 <sup>3</sup> / <sub>4</sub>	15 - 16 <sup>3</sup> / <sub>4</sub>
41	17 <sup>3</sup> / <sub>4</sub>	13 - 14 <sup>3</sup> / <sub>4</sub>	15 - 16 <sup>3</sup> / <sub>4</sub>
42	18	13 - 14 <sup>3</sup> / <sub>4</sub>	15 - 16 <sup>3</sup> / <sub>4</sub>

AVOCA			
SIZE	HEIGHT	CALF REG	CALF WIDE
37	15 <sup>3</sup> / <sub>4</sub>	13 - 14 <sup>3</sup> / <sub>4</sub>	15 - 16 <sup>3</sup> / <sub>4</sub>
38	16	13 - 14 <sup>3</sup> / <sub>4</sub>	15 - 16 <sup>3</sup> / <sub>4</sub>
39	16 <sup>1</sup> / <sub>4</sub>	13 - 14 <sup>3</sup> / <sub>4</sub>	15 - 16 <sup>3</sup> / <sub>4</sub>
40	16 <sup>3</sup> / <sub>4</sub>	13 - 14 <sup>3</sup> / <sub>4</sub>	15 - 16 <sup>3</sup> / <sub>4</sub>
41	17	13 - 14 <sup>3</sup> / <sub>4</sub>	15 - 16 <sup>3</sup> / <sub>4</sub>
42	17 <sup>1</sup> / <sub>4</sub>	13 - 14 <sup>3</sup> / <sub>4</sub>	15 - 16 <sup>3</sup> / <sub>4</sub>

CM

LEGACY, MANOR, PARKLAND				
SIZE	HEIGHT	CALF REG	CALF WIDE	WIDE+ PARKLAND ONLY
37	42.5	33 - 37	38 - 42.5	39.5 - 43
38	43.3	33 - 37	38 - 42.5	39.5 - 43
39	44.1	33 - 37	38 - 42.5	39.5 - 43
40	44.9	33 - 37	38 - 42.5	39.5 - 43
41	45.7	33 - 37	38 - 42.5	39.5 - 43
42	46.5	33 - 37	38 - 42.5	39.5 - 43

LIFFEY			
SIZE	HEIGHT	CALF REG	CALF WIDE
37	42.1	33 - 37	38 - 42.5
38	42.9	33 - 37	38 - 42.5
39	43.6	33 - 37	38 - 42.5
40	44.4	33 - 37	38 - 42.5
41	45.1	33 - 37	38 - 42.5
42	45.9	33 - 37	38 - 42.5

AVOCA			
SIZE	HEIGHT	CALF REG	CALF WIDE
37	40.1	33 - 37	38 - 42.5
38	40.9	33 - 37	38 - 42.5
39	41.6	33 - 37	38 - 42.5
40	42.4	33 - 37	38 - 42.5
41	43.1	33 - 37	38 - 42.5
42	43.9	33 - 37	38 - 42.5

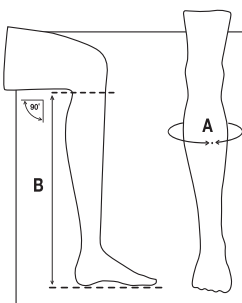
SHANNON H <sub>2</sub> O - INCHES					
US SIZE	EU SIZE	CALF SLIM	CALF REG	CALF WIDE	HEIGHT
6.5 / 7	37	13 <sup>1</sup> / <sub>2</sub>	14 <sup>1</sup> / <sub>2</sub>	15 <sup>3</sup> / <sub>4</sub>	16
7.5	38	13 <sup>1</sup> / <sub>2</sub>	14 <sup>1</sup> / <sub>2</sub>	15 <sup>3</sup> / <sub>4</sub>	16 <sup>1</sup> / <sub>4</sub>
8 / 8.5	39	13 <sup>3</sup> / <sub>4</sub>	15	16 <sup>1</sup> / <sub>4</sub>	16 <sup>1</sup> / <sub>2</sub>
9	40	13 <sup>3</sup> / <sub>4</sub>	15	16 <sup>1</sup> / <sub>4</sub>	16 <sup>3</sup> / <sub>4</sub>
9.5 / 10	41	14 <sup>1</sup> / <sub>2</sub>	15 <sup>1</sup> / <sub>2</sub>	16 <sup>1</sup> / <sub>2</sub>	17 <sup>1</sup> / <sub>4</sub>
10.5	42	14 <sup>1</sup> / <sub>2</sub>	15 <sup>1</sup> / <sub>2</sub>	16 <sup>1</sup> / <sub>2</sub>	17 <sup>1</sup> / <sub>2</sub>

SHANNON H <sub>2</sub> O - CM					
US SIZE	EU SIZE	CALF SLIM	CALF REG	CALF WIDE	HEIGHT
6.5 / 7	37	34	36.5	40	40.5
7.5	38	34	36.5	40	41.5
8 / 8.5	39	35	38	41.5	42
9	40	35	38	41.5	42.5
9.5 / 10	41	36.5	39.5	42	44
10.5	42	36.5	39.5	42	44.5

## PADDOCKBOOTS SIZES

FOOT SIZE CONVERSION											
EU	35	36	37	38	39	40	41	42	43	44	45
US	4 <sup>1</sup> / <sub>2</sub> - 5	5 <sup>1</sup> / <sub>2</sub> - 6	6 <sup>1</sup> / <sub>2</sub> - 7	7 <sup>1</sup> / <sub>2</sub>	8 - 8 <sup>1</sup> / <sub>2</sub>	9	9 <sup>1</sup> / <sub>2</sub> - 10	10 <sup>1</sup> / <sub>2</sub>	M 10	M 11	M 12
UK	2 - 2.5	3	4	5	6	6.5	7	8	9	10	11

## HALF CHAP MEASURING INSTRUCTIONS



### Height Measurement (B)

1. Place bare foot on the ground
2. Bend upper leg to 90° angle
3. Measure from floor to underside of upper leg (B)

### Calf Measurement (A)

1. While wearing breeches measure around the widest part of your calf (A)

Note: Tredstep Chaps must be tightly fitted

ALL CHAPS (INCHES)					
HEIGHT (B) CALF (A)	15	16	17	18	19
12	12/15	12/16	12/17	12/18	
13	13/15	13/16	13/17	13/18	
14	14/15	14/16	14/17	14/18	14/19
15	15/15	15/16	15/17	15/18	15/19
16	16/15	16/16	16/17	16/18	16/19
17		17/16	17/17	17/18	17/19

# JUNIOR JACKET SIZING DETAILS

TREDSTEP JUNIOR JACKETS (INCHES)								
AGE	8	10	10+	12	12+	14	14+	16
① AROUND THE BUST	27	28 3/4	29 2/4	30 2/4	31 2/4	32 2/4	33 2/4	34 2/4
② AROUND THE WAIST	24 3/4	26 1/4	28 1/4	28 1/4	30 1/4	30 1/4	32 1/4	32 1/4
③ SLEEVE LENGTH FROM SHOULDER SEAM	18 3/4	19 3/4	19 3/4	21	21	22	22	23
④ BODY LENGTH FROM HIGHEST SHOULDER POINT	21	22 1/4	22 1/4	23 3/4	23 3/4	25	25	26 2/4
⑤ ACROSS SHOULDERS	12 1/4	12 3/4	13 1/4	13 2/4	13 3/4	14 1/4	14 2/4	14 3/4

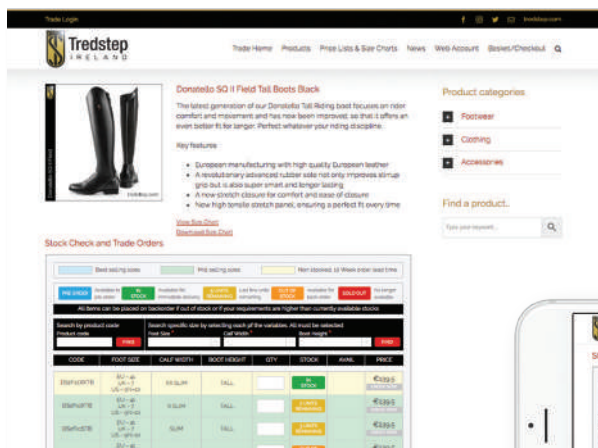
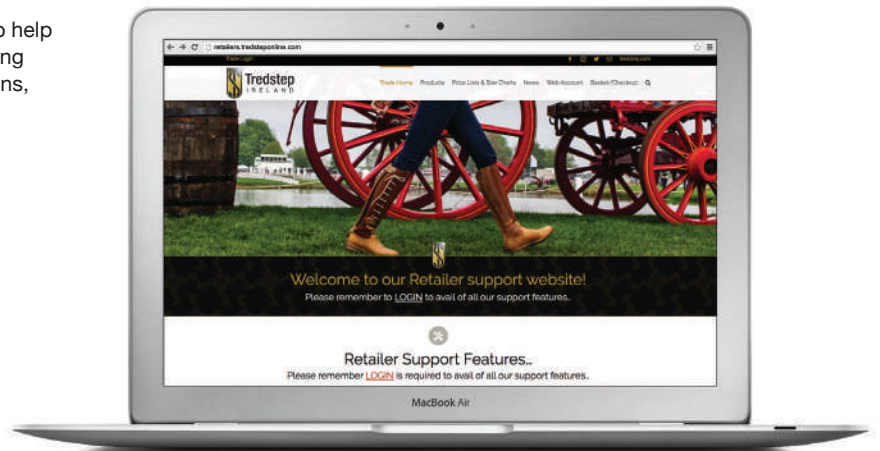
TREDSTEP JUNIOR JACKETS (CM)								
AGE	8	10	10+	12	12+	14	14+	16
① AROUND THE BUST	69	73	75	77 1/2	80 1/2	83	85	88
② AROUND THE WAIST	63	67	72	72	77	77	82	82
③ SLEEVE LENGTH FROM SHOULDER SEAM	47 1/2	50	50	53 1/2	53 1/2	56	56	58 1/2
④ BODY LENGTH FROM HIGHEST SHOULDER POINT	53	56 1/2	56 1/2	60	60	63 1/2	63 1/2	67 1/2
⑤ ACROSS SHOULDERS	31	32 1/2	33 1/2	34 1/2	35	36	37	37 1/2

## RETAILER SUPPORT

[retailersus.tredsteponline.com](http://retailersus.tredsteponline.com)

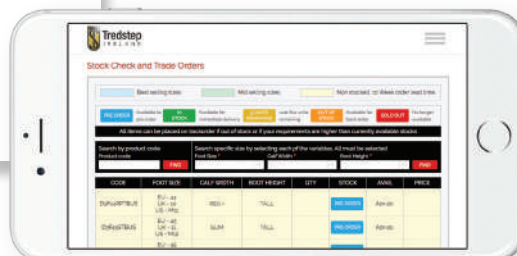


Our website hosts a section specifically designed to help you. It includes an online stock checking and ordering facility and download section for product descriptions, images and graphics.



## ONLINE STOCK CHECK AND ORDER

Login to check availability of specific products and place an order directly and swiftly.





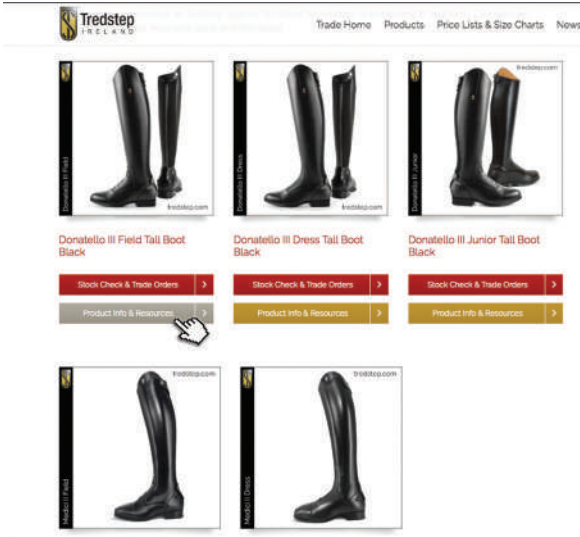
Retailer login:

[retailersus.tredsteponline.com](http://retailersus.tredsteponline.com)



## DOWNLOAD SECTION

Get access to our High and Low Resolution product images, logos and product text.

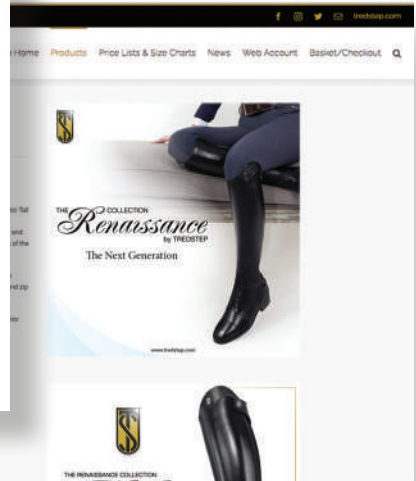
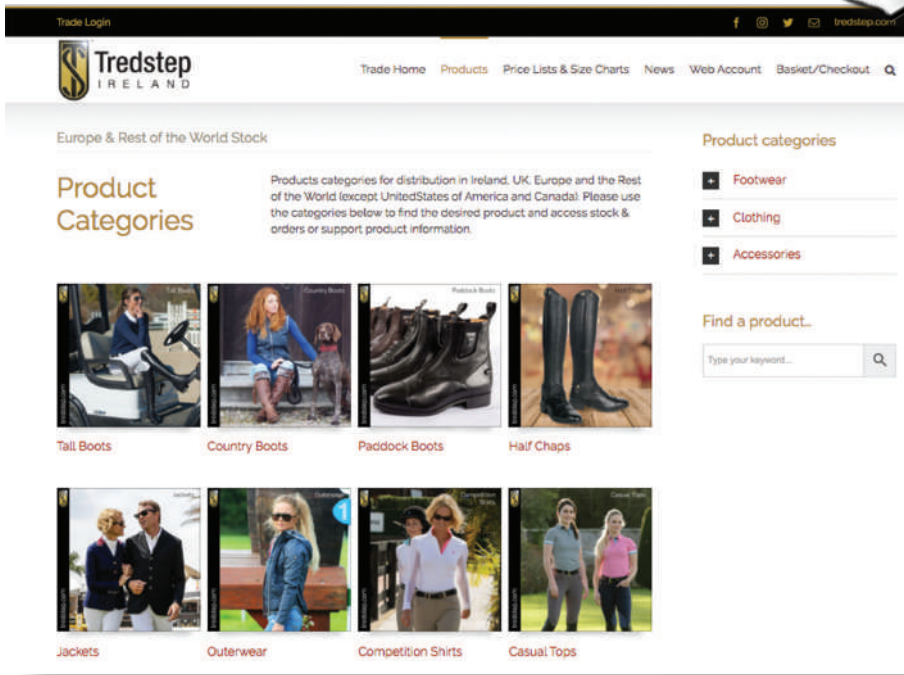


## MARKETING MATERIAL

Access to a variety of Facebook graphics, Email blast and additional material to promote your Tredstep range.

Retailer login:

[retailersus.tredsteponline.com](http://retailersus.tredsteponline.com)



# INSTORE DISPLAY EXAMPLES



# INSTORE DISPLAY EXAMPLE







# Tredstep

I R E L A N D

Retailer login:

[retailersus.tredsteponline.com](https://retailersus.tredsteponline.com)



Coolmine House, Murphystown Road,  
Sandyford, Dublin 18, D18 FD88, Ireland.

Tel: +353 (0) 1 295 0598  
Fax: +353 (0) 1 294 1015  
Email: [info@tredstep.com](mailto:info@tredstep.com)

[tredstep.com](https://tredstep.com)